

# Property Inspector Free Help

Utility for filtering, searching, sorting and editing VI properties and metrics from the project

Version 3.0.2, April 2024, © 2013 - 2024 ABCDEF. All rights reserved.

## Contents

Property Inspector Free Overview .....	2
Installation Requirements.....	2
Toolbar .....	3
Search Parameters .....	4
Search drop-down .....	4
Compare Modes .....	6
Value Field .....	6
Search Button .....	6
Search In Button .....	7
Edit Mode .....	7
Edit Text .....	7
Edit Selected Button .....	7
Results Table .....	8
Status Bar .....	8
Menu Bar.....	9
Settings.....	11
Object Types .....	11
Columns to Display .....	11
Search Options.....	12
Edit Options .....	12
Sort Columns.....	12
VI Scripting (This feature is not available in the Free version) .....	13
VI Script.....	13
QD Script.....	13
Error Details .....	14
Export.....	14
Other Errors .....	14
Search Examples .....	15
Support Resources .....	15

## Property Inspector Free Overview

**Property Inspector Free** is a powerful utility for filtering, searching, sorting and editing VI properties of all VIs in a project, class or library. All project items can be filtered by 17 categories. It allows searching all the items based on 41 VI properties including **VI Description**, **Data Size** and **Allow Debugging**. Some properties cannot be displayed in LabVIEW including **Clones**, **Date Modified**, **Execution Status**, **In Memory**, **Inline is Allowed** and **Modified**. After selecting all or some of the results, 21 of the 41 specified VI properties can be edited for a single VI in a single click. Powerful string manipulation functions allow for the entire field to be searched, edited, replaced or removed. It is also possible to modify a different VI property than the one searched.

**Property Inspector Free** supports many search criteria that are not allowed by LabVIEW, like finding any value, a missing value, comparing a value against a threshold, or finding a value of True or False. Search **Description** for blank identifies Vis that need documentation. Search **LV Version** for Less Than the current version will show all older code. Search **Execution Status** Equals 'bad' shows all broken code. Search **Reentrant** is True followed by Search In with **Reentrancy Type** Contains 'Pre' shows all Vis with Pre-allocated Reentrancy. Searching a single property by True can quickly isolate all Vis with **Allow Debugging**, **Auto Error Handling** or **Modified** status.

Flexible edit modes allow replacing a string with an empty value, replacing the whole string and not just the match, or removing a path value by replacing it with Not-A-Path. Sorting all VIs by value would identify VIs with the highest **Data Size**, **Code Size** or **Revision Number**. Unlike VI Profiler, the **Data Size** shows the memory used before the VI is executed and would identify static data saved in the front panel or block diagram. All VIs are searched against the VIs in memory to determine if they are loaded **In Memory**.

Selected search results can all be edited, opened or run in a single operation. One click can show the block diagrams of all VIs or select them in the Project Explorer. All opened windows can be closed with a single operation. The settings can enable all elements by 17 object types and which of the 41 VI properties are displayed, allowing just the items of interest to be shown.

Two new features in Version 3.0.2 are **Global Exclusion™** and **Persistent Selection™**. Searching the category ALL with a mode of Exclude allows a quick way to remove a specific set of items from the search. **Persistent Selection™** maintains the selection of all items in the window after changing Object Filters, Search or Sort settings.

The utility keeps a history of the last 9 Search operations, and each can be repeated in a single click. Disabling Search on Select allows the history value to be edited before searching or compounded with Search In. This history can also be cleared.

It optionally includes all targets found in the project including cRIO and FPGA targets. Another option will include all dependencies shown in the project. Regardless of the settings, vi.lib and Packed Libraries are not included.

The utility can be found under the Tools menu -> ABCDEF -> Property Inspector Free...

## Installation Requirements

Compatible LabVIEW Versions: >= 2014.

Tested LabVIEW Versions: 2014, 2015, 2016, 2017, 2018, 2019, 2020, 2021, 2022, 2023 and 2024

Compatible OS Versions: Windows, Mac.

Hardware Requirements: None

Installation Requirements: VI Package Manger 2019 or later

## Toolbar



Buttons on the toolbar speed operation of common functions. Some buttons are disabled if they don't apply to the selection or can't be used during the current operation.

### **Open Project button**

Press the Open Project button to browse for the project file to open. The project file cannot be newer than the current LabVIEW version. If the project is older than the current version, any VIs edited would be updated to the current version.

### **Settings button**

Opens the settings dialog. Options include the project object types, columns to display, search options, edit options and column sorting.

### **Filter on button**

When a filter is applied, the Filter on button turns on. Click the filter on button to disable the filter and see the unfiltered results.

### **Open VI**

When one or more VIs are selected, this button will open all VI front panels. Holding the control key will show the block diagrams instead by minimizing the front panels. Use the Window->Close opened windows to close them automatically. Double-clicking a single item in the results window opens the front panel and holding control opens the block diagram.

### **Refresh**

When one or more VIs are selected, this button redraws the results for the selected row(s).

### **Back**

Moves the selection one row higher in the results table. This button is only enabled if a result item is selected except the last one.

### **Next**

Moves the selection one row lower in the results table. This button is only enabled if a result item is selected except the first one.

## Search Parameters

Search  Excludes

Edit Mode  Edit Text

Use the search parameters section to specify the properties or metrics to search by, the type of comparison and the value to display. Use the Edit Mode and Edit Text to change the value of the selected results.

### Search drop-down

Use this drop-down to select the VI property to search. Choices include:

Name	Description	Editable	Notes
ALL	Combines all string properties to simplify searching and excluding	No	Compare options are Contains and Excludes
Allow Debugging	VI Property found under Execution	Yes	
Auto Error Handling	VI Property found under Execution	Yes	
Block Diagram Size	VI Metric found under Memory Usage	No	
Callers	Hidden property visible by selecting View->Browse Relationships->This VI's Callers and then counting the VIs shown	No	
Class	Shown in the hierarchy of the project	No	
Clones	Hidden property	No	Found by searching reentrant VIs in memory
Code Complexity	Shows the complexity factor used when compiled	No	
Code Size	VI Metric found under Memory Usage	No	May show as 0 if Separate Code from Source is ON and the Vi is not in memory
Data Size	VI Metric found under Memory Usage	No	
Date Modified	File system property found on the disk	No	Enter a date in mm/dd/yy format and use Greater or Less Than. Just enter a year (2000 and later) and Less Than will use 1/1 and Greater Than 12/31
Description	VI Property found under Documentation	Yes	
Execution Priority	VI Property found under Execution	Yes	Includes background (0), normal, above normal, high priority, time critical and sub-routine (5). Enter the first letter or 0 to 5 to edit the value
Execution State	VI State indicated by a broken run arrow	No	Includes invalid, idle, running, bad, run top level
File Size	VI Metric shown under Memory Usage	No	Size of the VI file, LLB or library file
Front Panel Size	VI Metric found under Memory Usage	No	

History Text	VI Property found under General, Revision History...	Yes	Can only be cleared (remove)
In Memory	VI Metric found by searching memory for each VI	No	
Item Name	VI Property as shown in the project window	No	
Inline is Allowed	Hidden property	No	Shows if Inline SubVI can be set to true
Inline SubVI	VI Property found under Execution	Yes	Allowed only if debugging is false and reentrant is set to pre-allocate
Item Path	VI Property as shown in the Files display under the project. This path is relative to the project folder unless the item is outside the project folder	No	
Item Type	VI Property indicating the item type (Control VI, Standard VI, Global VI, Folder, etc.)	No	
Library	Shown in the hierarchy of the project	No	
Logging File Path	Used with Operate -> Data Logging	Yes	
LV Version	VI Property found under General (Source version)	No	
Modified	Hidden property shown when closing the project	Yes	Modified only by saving
Preferred Execution System	VI Property found Execution, Preferred Execution System	Yes	Includes user interface, standard, instrument I/O, data acquisition, other 1, other 2, same as caller. Use the first 4 letters to edit the value or 1, 2 for other
Protection	VI Property found under Protection	Yes	
Reentrant	VI Property found under Execution	Yes	
Reentrancy Type	VI Property found under Execution (Shared or Prealloc)	Yes	
Revision Number	VI Property found under General	Yes	Remove to set to zero. When writing this property, only replace with a value greater than the current revision number.
Run Time Menu	Setting found under Edit->Run-Time Menu...	Yes	
Same as VI Name	VI Property found under Window Appearance	Yes	
Separate Comp. Code	VI Property found under General (Separate compiled code from source file)	Yes	
Show front panel when called	VI Property found under Window Appearance, Customize	Yes	
Show Menu Bar	VI Property found under Window Appearance, Customize	YES	

Suspend when Called	VI Property found under the Operate menu	Yes	
Target	VI Property displayed in the bottom left corner of each VI after the project name	No	Typical values are My Computer, cRIO-xxxx or FPGA
Total Data Size	VI Metric shown under Memory Usage	No	This value is the sum of the other memory values
Transparency	VI Property found under Window Appearance, Customize	Yes	0 to disable, 100 is completely transparent
Window Title	VI Property found under Window Appearance	Yes	Set Same as VI Name to False before setting

### Compare Modes

Use this drop- to specify the comparison method. Text match case is an option specified in the settings.

String	Equals	Includes results where the property or metric equals the specified string value
	Contains	Includes results where the property or metric contains the specified string value
	Excludes	Includes results where the property or metric excludes the specified string value
	Starts With	Includes results where the property or metric starts with the specified string value
	Ends With	Includes results where the property or metric ends with the specified string value
Binary/String	Is Blank/0/False	Includes results where the property or metric is a blank string or a 0 value. This includes settings that are False.
	Not Blank/True	Includes results where the property or metric is not blank string or a not a 0 value. This includes settings that are True.
Numeric	Less Than	Includes results where the Metric is less than the specified value. Strings are compared character by character.
	Greater Than	Includes results where the Metric is greater than the specified value. Strings are compared character by character.

### Value Field

Enter the value to search for or to filter out. Enter the text to include or exclude from the results.

String	Enter text	Enter the text to include or exclude from the results.
Binary/String	1/T/0/F	Enter a 1 or T for true and a 0 or F for false.
Numeric	Enter number	Enter the number to compare. Metric syntax is allowed including K for 1,024 and M for 1,048,576. All value are integer except LabVIEW version, which returns a decimal digit (i.e. 8.6).
Special	Reentrancy Type	Enter 0 or S for Shared or 1 or P for Pre-allocate

### Search Button

Applies the search criteria to the entire project and displays the filtered results. This also sets the Filter On button.

### **Search In Button**

Applies the search criteria to the displayed results window and displays the combined search results. This also sets the Filter On button. There is no limit to the number of combined searches.

### **Edit Mode**

Enter the how the edit is to be applied to the selected Search item. Note that it is possible to change the Search item and edit a different property than was used to filter the results window.

Match	Replaces the part of the property that matches the filter by value with the edit text, same as replace for binary settings
Prepend	Inserts the edit text to the start of the filter by property, same as replace for binary settings
Append	Appends the edit text to the end of the filter by property, same as replace for binary settings
Replace	Replaces the entire property with the contents of the edit text, or True or False, or 0 or 1
Remove	Removes the entire property contents and leaves the field empty, false or Not-A-Path value

### **Edit Text**

Enter the text to edit the property. If the Edit Text box is disabled, selected search property is not editable. A multi-line string can be entered by pressing Control-Enter, or changing the settings to show slash codes (i.e. /r/n)

### **Edit Selected Button**

Applies the Edit Mode to the Selected property, optionally using the Edit Text and the Value Field. The selected property can be different than the searched property. **Property Inspector Free will only edit the first VI selected. Purchase the full version to edit all items in a single click.**

## Results Table

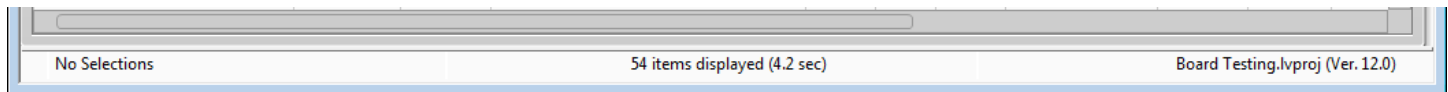
Item Name	Item Type	Exec State	Description	In Mem	Debug	Auto Err	Date Modified	Code Size	Data Size	FP Size
Test A.vi	Standard VI	Idle	Test a basic DAQ board image.	0	1	1	12/19/2012 9:00 PM	10.36k	141.82k	4.06k
Test B.vi	Standard VI	Idle	Test an elite DAQ board image.	0	1	1	12/19/2012 9:00 PM	4.62k	138.52k	4.06k
Test C.vi	Standard VI	Idle	Test a GPIB board image.	0	1	1	12/19/2012 9:00 PM	13.22k	143.48k	4.06k
Test_Common To All Boards.vi	Standard VI	Idle	Image check for blocks that are common t	0	1	1	12/19/2012 9:00 PM	7.58k	4.74k	4.06k
Get Test Name.vi	Standard VI	Idle	Build a test name from the board type and	0	1	1	12/19/2012 9:00 PM	2.14k	1.25k	4.75k
Test Boards_TASK.vi	Standard VI	Idle	See <b>Read_Me.html</b> in the <b>Bo	0	1	1	12/19/2012 9:00 PM	9.34k	2.87k	6.88k
Board Design.lvclass	LVClass		Base class for all board types.	1	0	0	12/19/2012 9:00 PM	0	0	0
Component Orientation and Positi	Control VI			1	0	0	12/19/2012 9:00 PM	0	0	5.76k

This table shows the project items flattened into a row format with the details separated by columns. Use the settings dialog to select which columns to display. The columns can optionally be sorted by the property name ascending or descending. The column widths can be adjusted by dragging the dividers. Double-click a VI in the results table to open it.

When the Filter On button is selected, the results table shows the filtered results. To edit VI properties, enter the change into the Edit Text box, select the rows in the table to change and press the Edit Selected button. Note that the editing the results table does not edit the VI properties in the VI.

Click on a column header to sort the results by the selected parameter. Click the same column to reverse the sort order. These sorting options can also be selected by the View menu.

## Status Bar



The status bar at the bottom of the window shows the current details of the project and the utility.

The left one-third shows the status of the toolbar and the Search Parameters. Messages include 'Initializing', 'Opening', 'Ready', 'Searching', 'Replacing', 'No Items', 'No Results', 'No Selections', 'Enter O, F, 1, or T', 'Enter Edit Text', "Enter year or date (mm/dd/yy)", 'Enter Current password' and 'Enter New Password'. If the status shows 'Cannot edit ???', then the Search property is not editable. This is common for all VI metrics. Select a different property to search by or perform an edit operation.

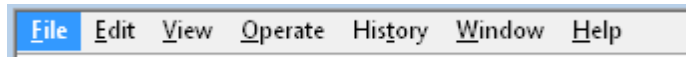
If the status is 'No Selections', one or more results must be selected for the edit operation.

The middle one-third shows the details of the selections in the results window. It shows total number of items in the project, number of items in the filtered results (with percentage), number of items selected and the name of the item if only one is selected. Some operations include the total time to complete the operation.

The right one-third shows the name of the selected project and its saved LabVIEW version.



## Menu Bar



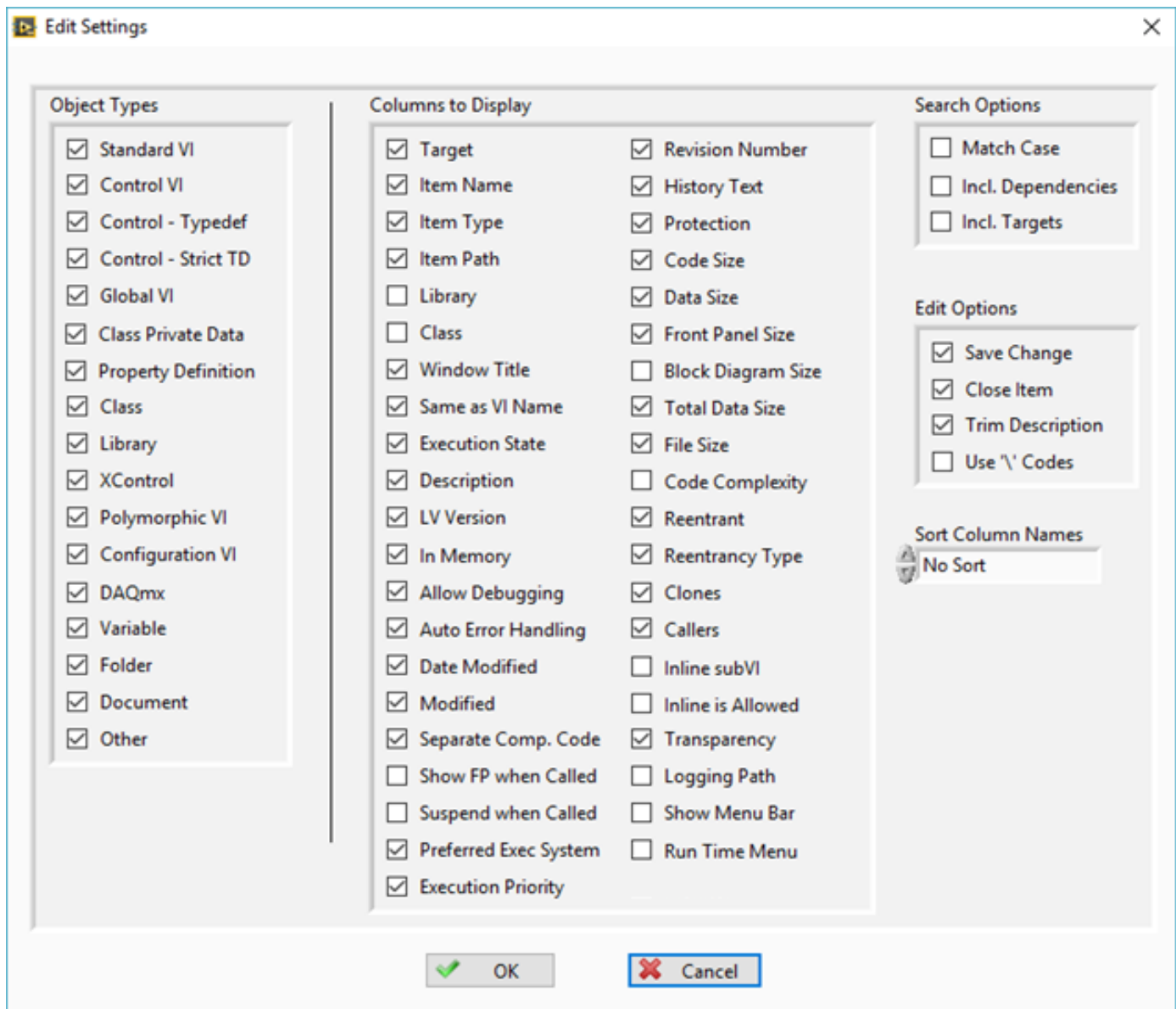
The menu bar includes several operations that are also on the toolbar, and several that only on the menu. Shortcut keys are shown by underlines, just like in the menu. Hold the Alt key to use the shortcuts. Control shortcuts are available for some menu items shown with the (^) symbol. Items in parenthesis are replaced by the actual content described.

<b>File Menu</b>	<u>Open Project ... (^O)</u>	Browses for a LabVIEW project file to load. An error shows if the Project file is newer than the current LabVIEW version.
	Open <u>L</u> VLib ...	Browses for a LabVIEW library file to load (.LVLib).
	Open <u>L</u> VClass	Browses for a LabVIEW class file to load (.LVClass).
	<u>R</u> eload Project	Reloads the currently opened project to synchronize all items
	<u>C</u> lose All	Closes the current project, library or class
	<u>S</u> ave Selected	Saves the selected items
	Save <u>A</u> ll	Saves all the items in the results window
	<u>E</u> xport Results	<b>This feature is not available in the Free version</b>
	<u>E</u> xit (^Q)	Exits the utility and closes the open project
<b>Edit Menu</b>	<u>S</u> elect All (^A)	Selects all rows of the results window
	<u>D</u> eselect All (^D)	Deselects all results
	<u>I</u> nvert Selection (^I)	Inverts the selection. Selects all results that are not selected and deselects all results that are
	<u>D</u> ele <del>t</del> e Selected VIs (^X)	<b>This feature is not available in the Free version</b>
	Open Script Template	Opens a sample Script Template VI for creating custom scripts using the VI Reference. The connector pane must not be modified.
	Select Script File	Selects a custom Script File to run
	Run <u>V</u> I Script	<b>This feature is not available in the Free version</b>
	Update <u>S</u> elections on Failure	When checked, only the VI Scripts that return a failure will remain selected
	<u>O</u> pen QD Script Template	Opens a sample QD Script Template VI for creating custom scripts using the VI Reference. The connector pane must not be modified.
	Select QD Script <u>F</u> ile	Selects a custom QD Script File to run
	Run <u>Q</u> D Script	<b>This feature is not available in the Free version</b>
<b>View Menu</b>	<u>S</u> ort By	Select the property column to sort by. Clicking the column header will also change the sort by setting. Select Unsorted to revert back to project order.
	<u>A</u> scending	When checked the sort is ascending and unchecked is descending
	Show <u>V</u> Is in Project	Selects all VIs selected in the PI window in the LabVIEW Project window
<b>Operate Menu</b>	Open VIs	Opens the selected VIs and controls
	Open <u>B</u> lock Diagrams (^E)	Opens the block diagrams of the selected VIs by minimizing the front panels
	Run VIs (^R)	Opens and runs the selected VIs
<b>History Menu</b>	(History list)	This menu provides a quick and easy way to perform repetitive operation on several projects or VIs. This list keeps a history of the last 9 operations. This list is stored on disk and kept for every use. Duplicates are filtered out. If only No History is shown, then there is no history.
	<u>C</u> lear History	This clears the list of history items
	<u>S</u> earch on Select (^O)	To speed repetitive operations, checking this option will perform the search on the history selection immediately. Disable to perform Search In results.

<b>Window Menu</b>	(Opened files)	This menu shows all the opened VIs.
	(Opened projects)	This section of the menu shows all the opened projects
	Close Opened <u>W</u> indows	If a large number of items are opened by the Open VIs function, this menu item will close them all at once. This option is only available when windows have been opened by the utility
	Show Edit Error Dialog	Displays the error dialog containing previous edit errors
<b><u>H</u>elp Menu</b>	Show <u>H</u> elp (F1)	Opens the help document (this one)
	<u>O</u> nline Support and Resources	Opens the product support webpage
	<u>Y</u> ouTube Videos	Opens a page with demonstration videos of the utility
	Search Examples	Loads examples shown below into the search and edit criteria
	<u>P</u> roduct Homepage	Opens the product page at abcdef.biz
	<u>L</u> abVIEW Tools Network	Opens the product page on the LabVIEW Tools Network
	<u>C</u> ommunity Quick Drop Keyboard Shortcuts	Opens the NI forum page listing the latest Quick Drop Plugins
	About Property <u>I</u> nspector	Displays the version number of the utility

## Settings

The settings window allows control of project object types to include, columns to display, filter options, edit options and column sorting.



### Object Types

Select the different types of project items to show in the results window. Types include Standard VI, Control VI, Control – Typedef, Control – Strict TD, Global VI, Class Private Data, Property Definition, Class, Library, XControl, Polymorphic VI, Configuration VI, DAQmx, Variable, Folder, Document and other items. Changes to Object Types will be applied immediately.

### Columns to Display

Select the VI property and VI metrics to show in the results window. Items include Target, Item Name, Item Type, Item Path, Library, Class, Window Title, Same as VI Name, Execution State, Description, LV Version, In Memory, Allow Debugging, Auto Error Handling, Date Modified, Modified, Separate Compiled Code, Show FP when Called, Suspend when Called, Preferred Exec System, Execution Priority, Revision Number, History Text, Protection, Code Size, Data Size, Front Panel Size, Block Diagram Size, Total Data Size, File Size, Code Complexity, Reentrant, Reentrancy Type, Clones,

Callers, Inline SubVI, Inline is Allowed, Transparency, Logging Path, Show Menu Bar and Run Time Menu. Turning off the display of a column does not prevent it from being searched or edited.

### ***Search Options***

**Match Case** selects if text filters are case-independent or case-sensitive. Editing in Match mode will use the same case setting. Select **Include Dependencies** to include them in the results. Enable **Include Targets** to show cRIO and FPGA targets. If a project is already loaded and this box is enabled the use File -> Reload Project to see the targets.

### ***Edit Options***

**Save Change** will automatically save the VI after each edit operation. **Close Item** will close each VI. If Save Change is off and Close Item is on, LabVIEW will prompt for every VI to be saved or not. **Trim Description** will trim the whitespace from both ends of the Description before editing the string. **Use '\ Codes** will change the display of the Search Text and Edit Text to display \ codes.

### ***Sort Columns***

The result columns are pre-arranged in the same order as the Columns to Display settings. For convenience, all the columns may be sorted alphabetically by the displayed name of the column. Options include no sort, ascending order and descending order.

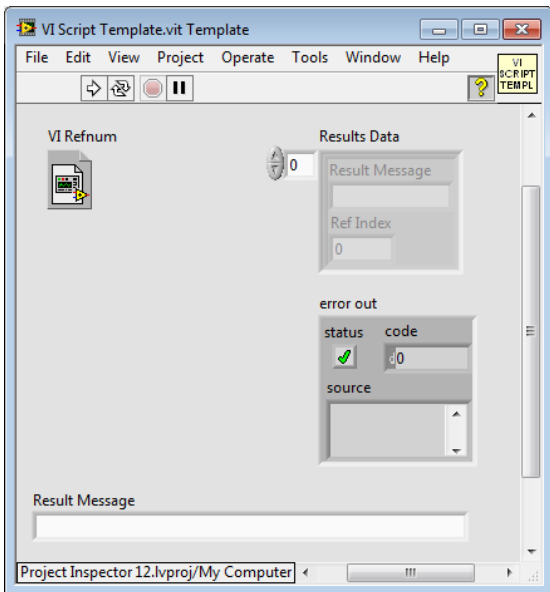
## VI Scripting (This feature is not available in the Free version)

Scripting allows custom extension of the operation of the Property Inspector beyond the properties that can currently be edited. In only a few minutes, a scripting VI could be written to search or edit other properties or perform more complex edits. Leveraging the existing library of Quick Drop shortcuts provides a quick and easy capability of performing common operations without writing any code.

Standard templates are provided to assist the creation of these scripts. The front panel must not be altered, since the script is called dynamically. Save the modified script in any location and select it using the menu option. Then select all the Vis to be edited and run the script. Any errors generated will be displayed by the Error Details dialog. Both selected QuickDrop and VI scripts files are stored separately, allowing both to be used alternately. It is possible to disable save and close for the first scripts and enable both for the last script run to minimize revisions.

### VI Script

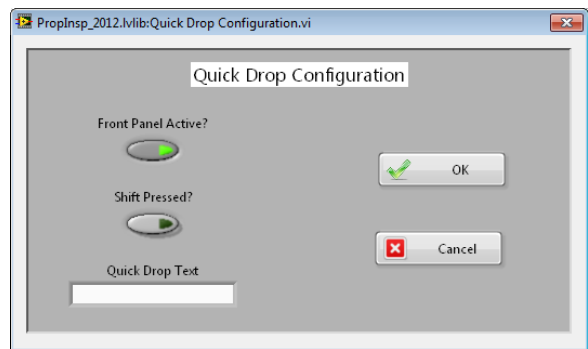
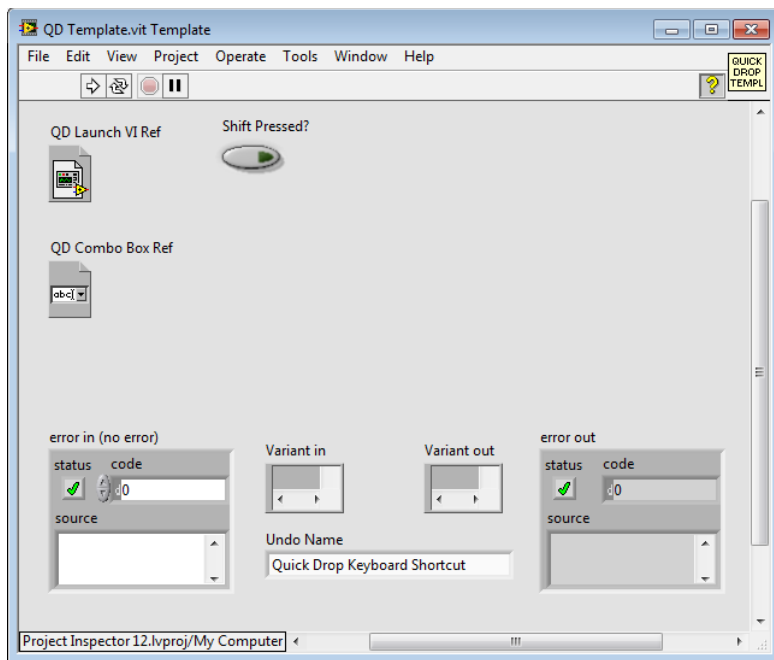
Use the included template VI based on the standard VI Analyzer template to write custom operations. PI will open the VI before the script and optionally save and close it (based on settings dialog). If Update Selections on Failures is checked, then only the VIs that return an array of Results Data will remain selected. This can be used to perform custom or complex search criteria. The status bar in the center will display the number of failures and the selected items.



### QD Script

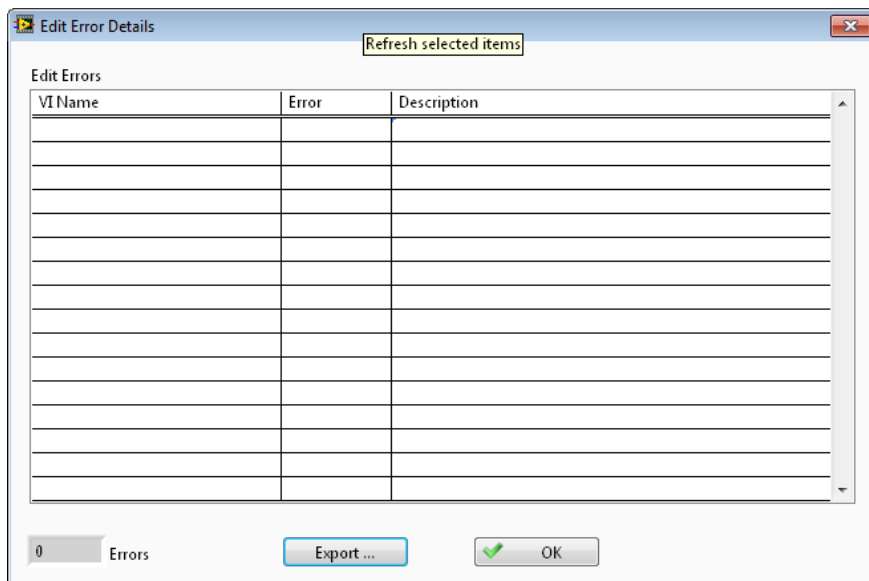
Use the included template VI based on the standard Quick Drop template to write custom operations. If there are Quick Drop shortcuts installed with LabVIEW, they can also be used. Alternatively, use the included link in the Help menu to download pre-written QD scripts from the Quick Drop Community. Use the Quick Drop Configuration panel to set the required options once for all VIs.

PI will open the VI before the script and optionally save and close it (based on settings dialog).



## Error Details

If any errors are detected during the editing process, a dialog will list the VIs with the corresponding error codes and a description of the errors. The total number of errors is also shown.



## Export...

The list of errors with the details shown can be exported to a spreadsheet file for additional analysis or corrective actions.

## Other Errors

Other error dialogs include: Project file is newer than current LabVIEW version, Library file is newer than current LabVIEW version, LVClass file is newer than current LabVIEW version, No selection, No columns are displayed, Not all items could be deleted, Not all items could be opened and Not all elements could be run.

## Search Examples

Here are several useful examples of Property Inspector operations. The Property Inspector settings are expressed exactly as it appears on the screen. Some examples show the edit operation with sample edit text and notes in parenthesis.

All of these examples can be found in the Help menu under Search Examples.

1. Description Starts With Use this template to, Remove
2. Description Is Blank/0/False, Replace (Description of each VI) (then press Next to advance to the next VI)
3. Allow Debugging Not Blank/True, Remove (remove will disable Allow Debugging)
4. Execution State Equals Bad
5. Data Size Greater Than 100K
6. VI Version Less Than 12
7. In Memory Is Blank/0/False (locates all VIs not in memory)
8. Auto Error Handling Not Blank/True, Remove
9. Is Reentrant Not Blank/True
10. Reentrancy Type Contains Pre, Replace S (Search In the results of example 9 to narrow the results)
11. Date Modified Less Than 2010
12. Separate Comp. Code Is Blank/0/False, Replace T

## Support Resources

For support with Property Inspector, use the following resources:

Website: <http://support.abcdef.biz>

Phone: 1-800-422-1523

Email: [support@abcdef.biz](mailto:support@abcdef.biz)

View quick demonstration Videos on the [ABCDEF YouTube Channel](#)